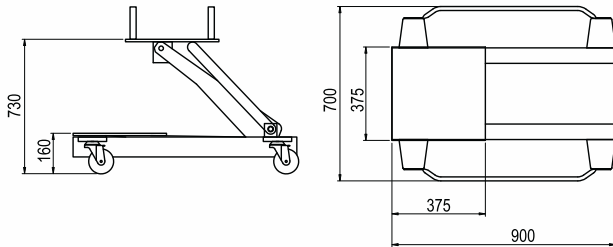


Transmission jacks



Particularly useful in the replacement of differential sets, transmissions, gear boxes, engines, etc.

The saddle is fitted with chains to ensure safe movement of load. Equipped with a detachable pump, which allows the jack to be used in any position.



Capacity (kg)	1000
Weight	86
Ref.	GCB-2



Safety overload valve.
Hydraulic stroke limitation.



The side fitting of the hydraulics leaves all the central space clear to access the wheel.

LCS lowering control system. (SR700 model)
"Dead man's" principle operation. (SR700 model)
Safety overload valve. (SR700 model)
Hydraulic stroke limitation.

Capacity (kg)	700	500
Fork width	480-750	600
Min. height to fork	105	90
Maximum lift	630	240
Weight (kg)	134	92.5
Reference	SR700	SRH



Simplified model.