

# TE 905-AVR breaker

## Maximum power, minimum vibration

### Uses

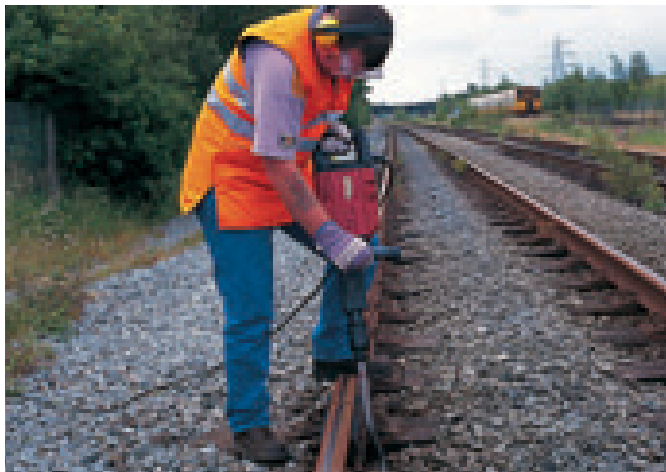
- Chiselling and demolition work on concrete, masonry, stone and asphalt

### Technical data

Power input:	1600 W
Hammering speed under load:	2200 blows/min.
Single impact energy:	20 J
Dimensions (L×W×H):	680×110×180 mm
Weight of machine:	11.3 kg

Typical chiseling performance on medium-hard concrete: approx. 1300 cm<sup>3</sup>/min.

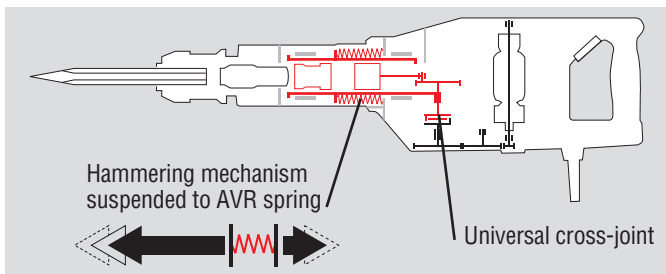
TE-S chuck, symmetrical in-line design, permanent lubrication, rubber-padded grip and pivoting side handle, generously-dimensioned grip for 2-hand operation, automatic cut-out carbon brushes, electronic speed limitation, on/off switch, integrated AVR active vibration reduction, no-load hammering cut-out and kick-back prevention, dual-chamber oil lubrication, service indicator light, electrical protection class II (double insulated), radio and television interference suppression. Complies with the following standards or standardization documents: EN 50144, EN 55014 or EN 55011, EN 60555 in accordance with the directives 73/23/EWG, 89/336/EWG, 89/392/EWG, 84/537/EWG.



## Hilti TE 905-AVR

Ordering designation	Item no.
Hilti TE905-AVR breaker, complete, (110V)	00376559
Hilti TE905-AVR breaker, complete, (240V)	00376556

Equipped with 4-meter supply cord, impact-resistant plastic toolbox, Hilti grease, dust caps, cleaning cloth and operating instructions



### Advantages

- 50% lower vibration thanks to AVR active vibration reduction. Less tiring to use, higher daily productivity.
- High reliability in prolonged intensive use.
- Constant high performance and less sticking in the concrete or masonry with the new self-sharpening polygon chisels.



<b>HILTI</b> 1 Year	
LIFETIME SERVICE	NO COSTS
Lifetime	Lifetime
REPAIR COST LIMIT	MANUFACTURERS WARRANTY